

THORN

LIGHTING PEOPLE

Case Study

Allianz Riviera, Nice, France

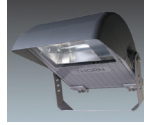


Opened in September 2013, the Allianz Riviera in Nice, France, represents the next generation of stadia. With a 35,000-seat capacity, it will host several matches in the UEFA Euro 2016 finals. It also boasts an extensive and varied programme of sporting and cultural events, concerts and shows, as well as being home to the national sports museum.

Products used



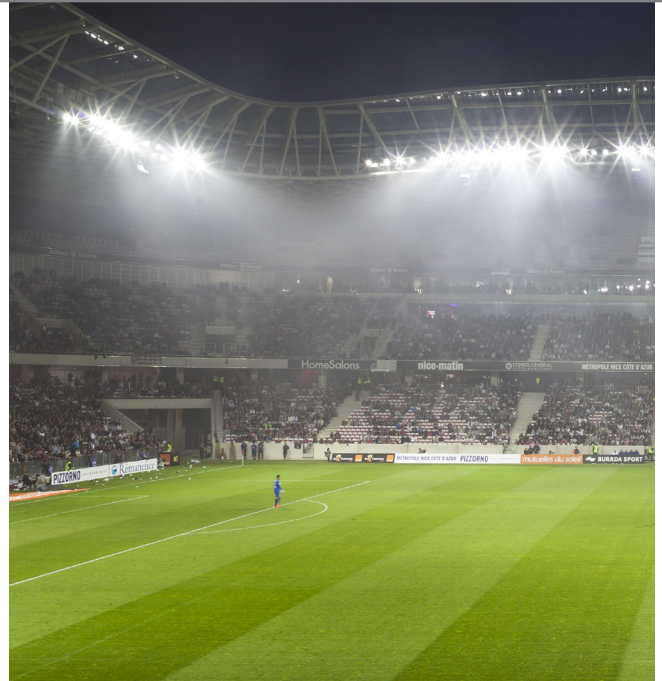
Mundial



Areaflood

Key facts

- Pitch size: 105x68m
- Lighting level: 2000 lux
- Horizontal illumination: 2577 lux



Allianz Riviera, Nice - OGC Nice - www.ogcnice.com – Photo: Serge Demailly



Allianz Riviera, Nice - OGC Nice - www.ogcnice.com – Photo: Serge Demailly

VINCI, a returning customer and leading player in building and operating the hosting Euro 2016 stadia, approached Thorn with a requirement to provide Allianz Riviera's pitch and exterior sports and area lighting.

Virginie Ameingual, Technical sales at Thorn Lighting explains: "The project was won on the basis of VINCI's confidence in Thorn's extensive stadium lighting experience. In particular, Thorn was able to reassure VINCI that it would achieve the stringent photometric results requested by FIFA for horizontal and vertical lighting."

Mundial and Areaflood selected for sports and area lighting

Thorn's Mundial and Areaflood luminaires were selected for the stadium's floodlighting, with Mundial being used for the pitch and Areaflood for the exterior concourse. Mundial is a high power, high performance floodlight specifically designed for sporting applications. For this application, various precision optics have been used to achieve uniformity and combined with baffles to eliminate glare and upward light spill.

Areaflood is a reliable, general purpose area floodlight with superior optical performance and light control. Its accurate optical system with integrated visor effectively controls obtrusive light (0 cd at 90°).

Correct and efficient sports lighting with task/scene setting

This sports lighting scheme benefits from task/scene setting to allow the stadium to set one of four pitch lighting modes. Mode 1 lights the pitch to 2000 lux, meeting the Euro 2016 requirements. Mode 2 lights the pitch to 1600 lux, meeting national and first league requirements. Finally, mode 3 and 4 light the pitch to 1400 lux and 1000 lux respectively. These modes allow lower levels of lighting to be set as permitted. As well as ensuring the correct light level is used, the various modes allow energy consumption to be minimised when possible.

Sales Director Mediterranean Region Jean-Luc Allemand explains "We are very pleased to have participated in the lighting for this prestigious achievement. This is the result of close collaboration between Vinci and Thorn, from the design to the implementation."

From Thorn's 15 ways to save energy, the following are key to minimising energy consumption at Allianz Riviera:



Luminaire distribution

The use of a mix of distributions, each optimised for a specific task, ensures all relevant target areas are correctly lit with minimum waste light and maximum efficiency.



System Efficacy

The chosen luminaires use light sources with a high efficacy. Combined with precision optics and the use of various baffles to eliminate waste/upward light, this provides a high system efficacy.



Task/scene setting

The creation of four pitch lighting modes (1000 lux to 2000 lux) allows the correct light level to be set. This reduces light levels and therefore energy consumption for a significant proportion of time.

THORN

LIGHTING PEOPLE



www.thornlighting.com

Thorn Lighting is constantly developing and improving its products. All descriptions, illustrations, drawings and specifications in this publication present only general particulars and shall not form part of any contract. The right is reserved to change specifications without prior notification or public announcement. All goods supplied by the company are supplied subject to the company's General Conditions of Sale, a copy of which is available on request. All measurements are in millimetres and weights in kilograms unless otherwise stated.

Publication Date: 07/14