

# THORN

LIGHTING



## AXYL GILD

CHOICE AS STANDARD

# CHOICE AS STANDARD

Axyl Gild is an elegant family of square and rectangular shaped wall luminaires available in three sizes with multiple light emissions and beam angle options.

Its simple yet aesthetically pleasing design means that Axyl Gild can blend perfectly into the environment. The use of a reflector combined with special lenses offers narrow and perfectly defined beams of light on the wall, while the combination of the same reflector with a tempered glass means inviting wide beams of light can be created to enhance facade textures. With many variations available across three sizes, the choice is yours.

Axyl Gild is available as Non-Dim (On/Off), with driver on-board, or a separate DALI2 driver is available.



## DARKSKY ACCREDITATION

'DarkSky' is recognised as the global authority on light pollution and is the leading organisation combating this issue worldwide.

The DarkSky Approved seal is a highly regarded accreditation for manufacturers. The process to achieve this accreditation reviews key features and benefits of a luminaire, its fundamental design and deep dive analysis of photometric data to ensure the product meets strict requirements to limit light pollution.

Dark Sky International fixture seal of approval relates to  $\leq 3000$  K only with dimming capability and downward light only. Luminaires must be mounted as photometered. Axyl Gild (Large) only.





BIERGARTEN



# AXYL GILD

## FEATURES

### SHAPE AND SIZES

Axyl Gild is a square wall mounting luminaire (small or medium) or a rectangle shape (large).

Small; 120 length x 120 height x 140 mm depth.  
Medium; 180 length x 180 height x 206 mm depth.  
Large; 265 length x 100 height x 110 mm depth.

### LIGHT QUALITY

CRI80 small versions, CRI90 medium and large versions.

### VISUAL COMFORT

The use of a reflector combined with special lenses offers narrow and perfectly defined beams of light on the wall. While the combination of the same reflector with a tempered glass means inviting wide beams of light can be created.

### CONTROLLABILITY

Axyl Gild is available with Non-Dim (On/Off), or a remote DALI2 driver can be ordered separately.

### DURABILITY

The Axyl Gild family is rated IK06 and IP65.  
Corrosion Class C3.

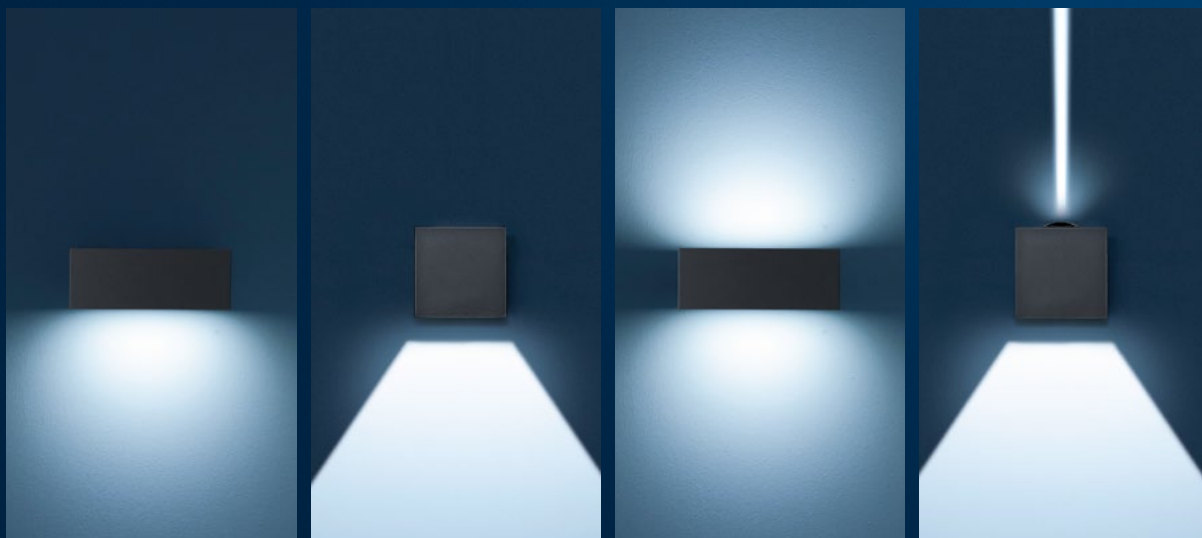
### HOUSING COLOUR

Available in White (R9016), Black (R9005), Light Grey (R9006) and Anthracite Grey (G9005).

### TECHNICAL DESCRIPTION

Die-cast aluminium housing with high corrosion resistance.  
Reflector in polymers covered with pure aluminium.  
Clear toughened glass.  
Stainless steel A4 screws.  
Silicone gaskets.  
Double Power Paint process.  
3 SDCM.  
ULOR: 0 for single emission downward light variants.  
Risk Class: RG1.  
Operating Ambient Temperature -20° C to +50° C.  
Lifetime: 70,000 Hrs L80 B10 Ta 25° C / 50,000 Hrs L80 B10 Ta 40° C.

### CERTIFICATION





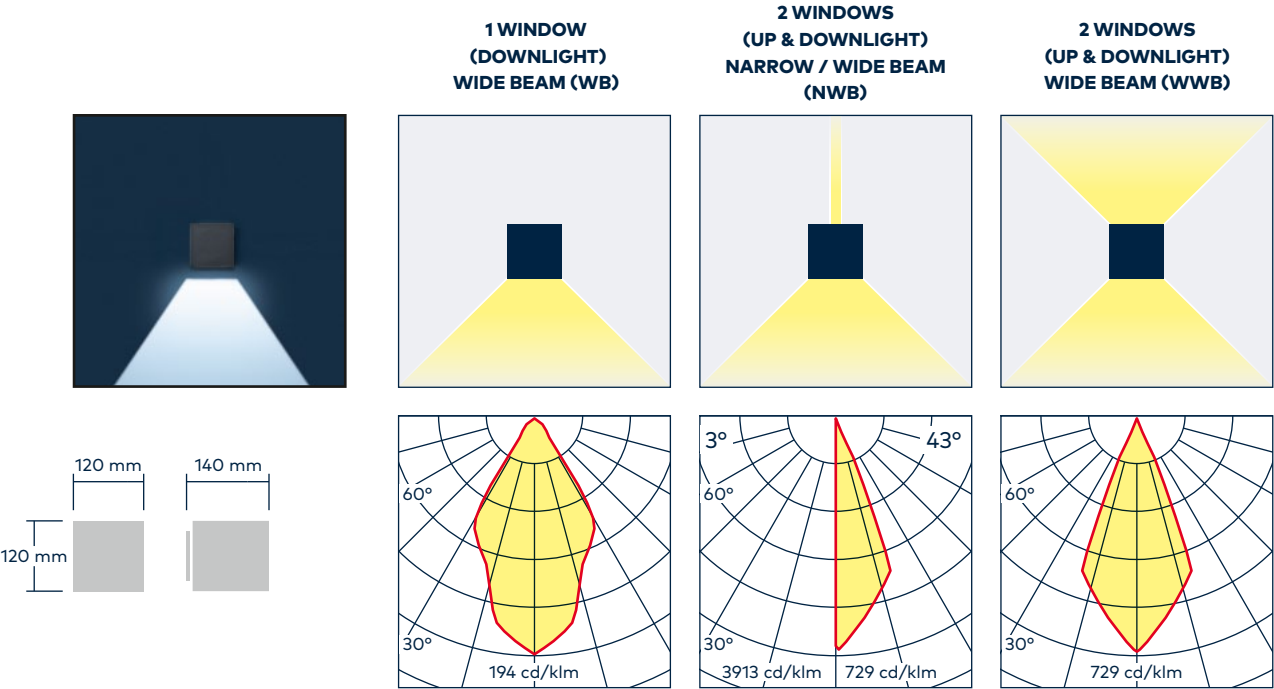
# PHOTOMETRIC SUMMARY

Size	Light emission	Colour temp	Beam angle	Lumen output (lm)	Power (W)	Rated input power (W)	Luminaire efficacy (lm/W)
Small	One window - downlight	CRI 80 2700 K	Wide beam (60°)	36	2	4	9
		CRI 80 3000 K		38			9.5
		CRI 80 4000 K		41			10.25
	Two windows - up and downlight	CRI 80 2700 K	Narrow (2°) up and wide (60°) down	55	4	5.5	10.00
		CRI 80 3000 K		58			10.55
		CRI 80 4000 K		63			11.45
		CRI 80 2700 K	Wide up and down (60°)	72			13.09
		CRI 80 3000 K		76			13.82
		CRI 80 4000 K		82			14.91
Medium	One window - downlight	CRI 90 2700 K	Wide beam	191	15.3	18	10.61
		CRI 90 3000 K		202			11.22
		CRI 90 4000 K		208			11.56
	Two windows - up and downlight	CRI 90 2700 K	Narrow (2°) up and wide (60°) down	295			16.39
		CRI 90 3000 K		311			17.28
		CRI 90 4000 K		320			17.78
		CRI 90 2700 K	Wide up and down (60°)	383			21.28
		CRI 90 3000 K		404			22.44
		CRI 90 4000 K		416			23.11
Large	One window - downlight	CRI 90 2700 K	Ultra Wide Beam (89°)	576	8.9	10.4	55.38
		CRI 90 3000 K		607			58.37
		CRI 90 4000 K		634			60.96
	Two windows - up and downlight	CRI 90 2700 K		1153	17.8	19.8	58.23
		CRI 90 3000 K		1214			61.31
		CRI 90 4000 K		1268			64.04

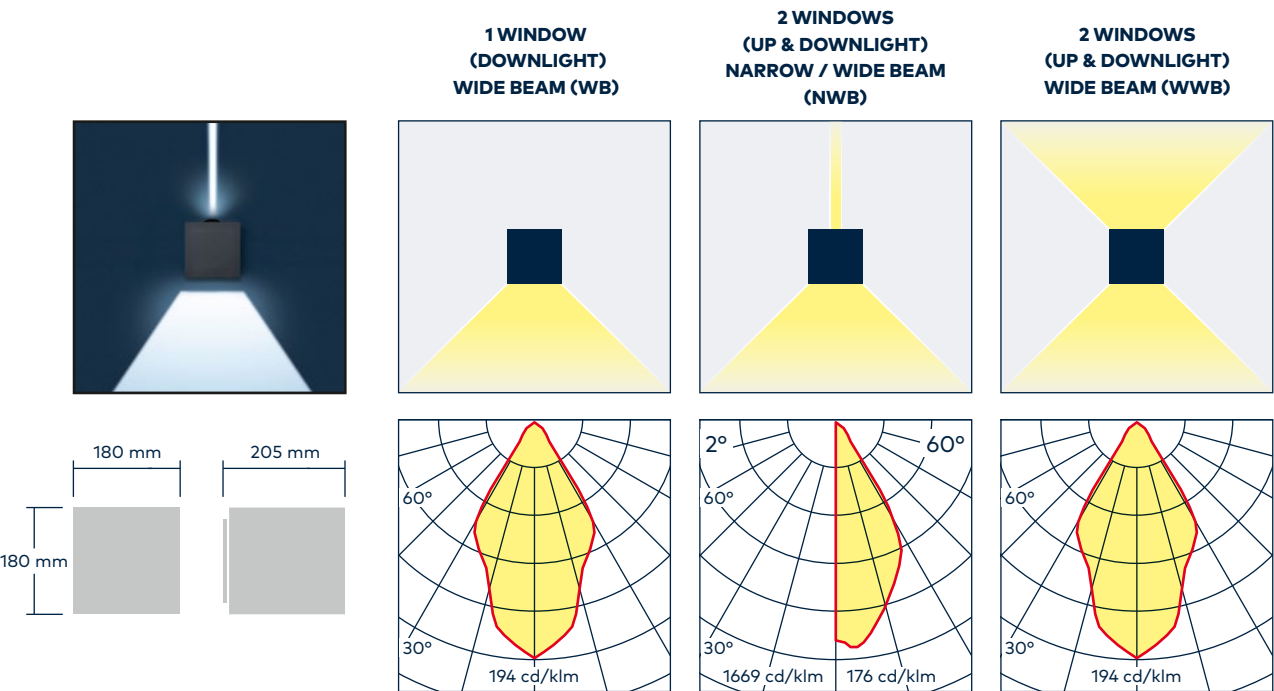
# AXYL GILD

## WALL MOUNTED

### SMALL



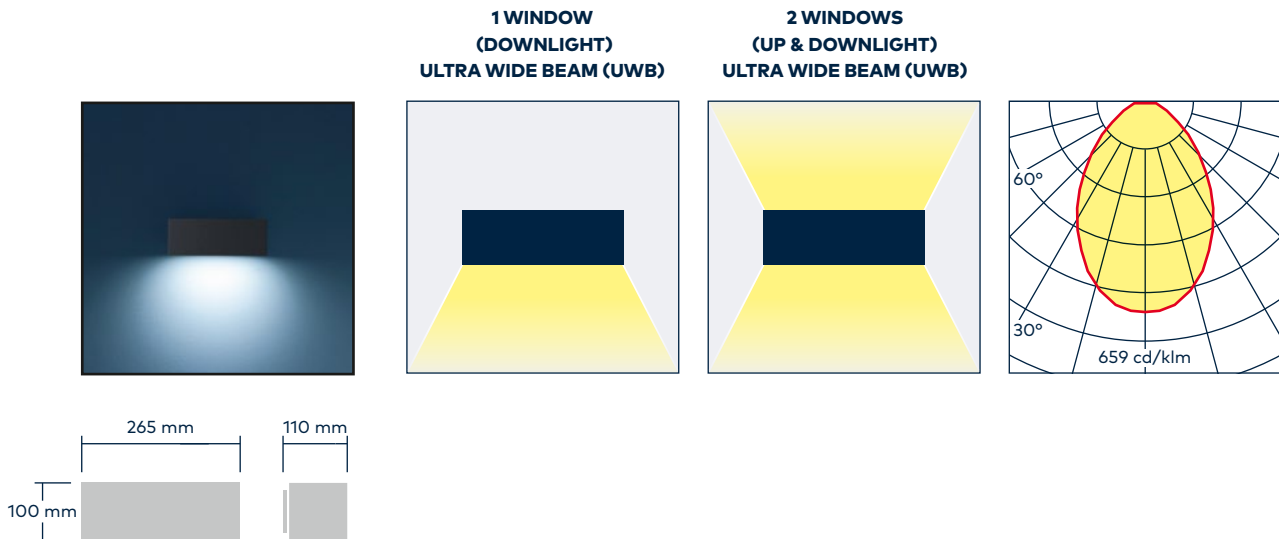
### MEDIUM



# AXYL GILD

## WALL MOUNTED

### LARGE



# ACCESSORIES

### ORDERING CODE: 96700028

#### (GB IP67 20W 230V 250-700 CL2 HFX)

POWER SUPPLY 230V/250mA-700mA,  
DALI DIMMABLE IN BOX.

IP67, 20W, CLASS II.

Dimensions; 175.5 mm x 86.5 mm x 43 mm.

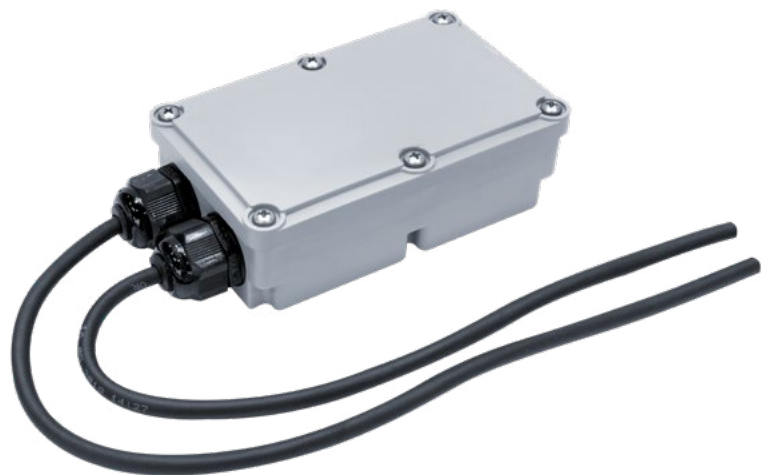
#### Will operate:

- Ten small luminaires (One window)
- Five small luminaires (Two windows)
- One medium luminaire (One window)
- One medium luminaire (Two windows)
- Two large luminaires (One window)
- One large luminaire (Two windows)

Maximum distance between luminaire  
and power supply 10 m.

Operating ambient temperature -20° C to +50° C.

Built-in surge protection (kV) L/N-PE: 2KV.





BUILD YOUR PRODUCT

AXYL GILD



WALL MOUNTED

Product	Size	Light emission	LED	Colour temp	Optic	Control	Body colour
Axl Gild	Small square 120 (L) x 120 (H) x 140 mm (D)	1 window 90° down-lighting	COB Chip On Board LEDs light engine	CRI90 2700 K	Wide beam symetrical (60°)	Non-Dim	White
		1W	1L	927	WB	HF	WH
	Medium square 180 (L) x 180 (H) x 206 mm (D)	2 windows 0° - 180° up and down lighting	LED Module made of 28 LEDs	CRI90 3000 K	Ultra Wide beam symetrical (89°)	Remote DALI2	Black
		2W	28L	930	UWB	RD*	BK
	Large rectangle 265 (L) x 100 (H) x 110 mm (D)			CRI 90 4000 K	Narrow beam 2° uplighting / Wide beam 60° down-lighting		Light Grey
							GY
				CRI 80 2700 K	Wide beam 60° up-lighting & downlight-ing		Anth Grey
							ANT
				CRI 80 3000 K			
				CRI80 4000 K			

EXAMPLE PRODUCT DESCRIPTION							
Axl Gild	S	1W	1L	927	WB	RD	ANT

\* Note: If the RD (Remote DALI2) option is selected, this will need ordering separately. Visit the website for more information.



As a globally leading luminaire manufacturer, Thorn Lighting provides a five-year warranty for its complete product range within all European Countries. [thornlighting.com/guarantee](https://thornlighting.com/guarantee)

Thorn Lighting is constantly developing and improving its products. All descriptions, illustrations, drawings and specifications in this publication present only general particulars and shall not form part of any contract. The right is reserved to change specifications without prior notification or public announcement. All goods supplied by the company are supplied subject to the company's General Conditions of Sale, a copy of which is available on request. All measurements are in millimetres and weights in kilograms unless otherwise stated. 07/2024 (INT)

WE  
MAKE  
LIGHT  
WORK