



THORN
LIGHTING

AXYL STRIDE

A TOUCH OF MAGIC

A TOUCH OF MAGIC

Axyl Stride offers all the advantages of a recessed wall fitting without the actual need for a recessed mounting box in the wall. At only 30 mm thickness, it appears to be recessed when in fact it boasts the ease of installation of a surface mounted luminaire. That said, it is possible to have the product completely flush with the wall by using the recessed box and fixing kit accessory, so the choice is yours depending on your application.

Axyl Stride possesses excellent asymmetric light distribution and complete glare control ensuring a dark sky sensitive and safe lighting installation as a result!

This range is available as Non-Dim (On/Off) driver on-board, or a separate remote DALI-2 driver can be purchased to offer advanced lighting control.



AXYL STRIDE

FEATURES

SHAPE AND SIZES

Axyl Stride is available in two shapes.

Square;

200 mm length x 200 mm height x 30 mm depth.

Rectangular;

270 mm length x 115 mm height x 21 mm depth.

LIGHT QUALITY

CRI 90.

VISUAL COMFORT

Axyl Stride is designed with light source recessed into the luminaire to provide downward asymmetric light distribution for premium visual comfort.

CONTROLLABILITY

Available as Non-Dim (On/Off), or a remote DALI-2 driver can be ordered separately.

DURABILITY

Axyl Stride is rated IK08 and IP65.
Corrosion Class C3.

HOUSING COLOUR

Available in White (R9016), Black (R9005),
Light Grey (R9006) and Anthracite Grey (G9005).

TECHNICAL DESCRIPTION

Die-cast and extruded aluminium housing with high corrosion resistance.

Stainless steel A4 screws.

Luminaire with double grommets.

Silicone gaskets.

Double Powder Paint process.

Electrical Class I.

3 SDCM COB light engine.

Risk Class RG1.

Operating Ambient Temperature -20°C to $+50^{\circ}\text{C}$.

Lifetime: 70 000 Hrs L80 B10 Ta 25°C / 50 000 Hrs L80 B10 Ta 40°C .

CERTIFICATION



PHOTOMETRIC SUMMARY

WALL MOUNTED

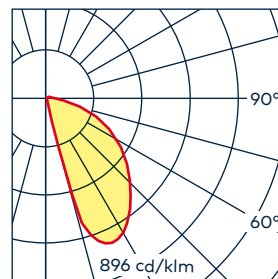
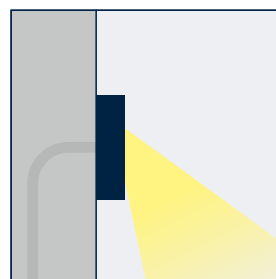
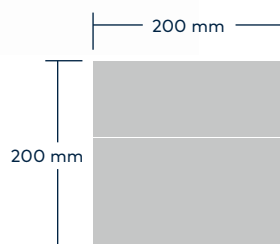
| Size | Colour temp | Beam angle | Lumen output (lm) | Power (W) | Rated input power (W) | Luminaire efficacy (lm/W) |
|-------------|--------------|---------------------------|-------------------|-----------|-----------------------|---------------------------|
| Square | 927 (2700 K) | Wide Beam Asymmetrical | 362 | 8.9 | 10.1 | 35.84 |
| | 930 (3000 K) | | 382 | | | 37.82 |
| | 940 (4000 K) | | 401 | | | 39.70 |
| Rectangular | 927 (2700 K) | Wide Beam Asymmetrical | 399 | 11.1 | 13.1 | 30.46 |
| | 930 (3000 K) | | 421 | | | 32.14 |
| | 940 (4000 K) | | 423 | | | 32.29 |



AXYL STRIDE

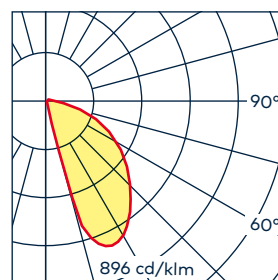
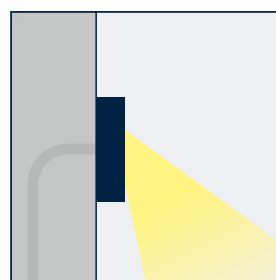
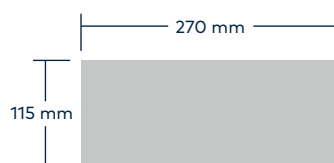
WALL MOUNTED

SQUARE



ASYMMETRICAL
WIDE BEAM (A/S)

RECTANGULAR



ASYMMETRICAL
WIDE BEAM (A/S)

ACCESSORIES

OUR ACCESSORIES ALLOW YOU TO CREATE A TRUELY RECESSED FINISH.



ORDERING CODE: 96700558

RECESSED BOX + FIXING KIT.

Suitable for fair faced concrete applications.
Extractor tools included.

Dimensions; 217 mm x 217 mm x 70 mm.

***To be used with the square version.**



ORDERING CODE: 96700545

RECESSED BOX + FIXING KIT.

Suitable for fair faced concrete applications.
Extractor tools included.

Dimensions; 288 mm x 133 mm x 75 mm.

***To be used with the rectangular version.**

ORDERING CODE: 96700028

(GB IP67 20 W 230 V 250-700 CL2 HFX)

POWER SUPPLY MULTI-POWER 230 V/
700 mA-1050 mA DALI-2, PUSH DIM IN BOX
IP67, 20 W, Class II.

Dimensions; 175.5 mm x 86.5 mm x 43 mm.

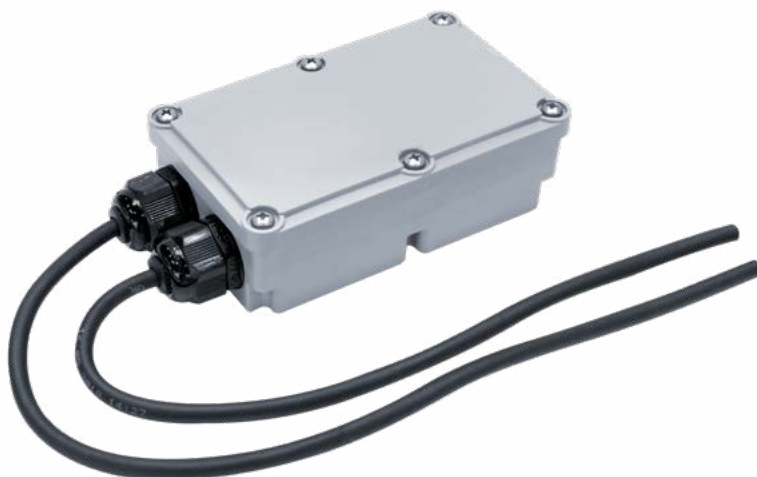
Will operate:

- Two medium (square) luminaires
- One large (rectangular) luminaire

Maximum distance between luminaire
and power supply 10 m.

Operating Ambient Temperature
-20 °C to +50 °C.

Built-in surge protection (kV) L/N-PE: 2 kV.



BUILD YOUR PRODUCT

AXYL STRIDE



Axyl Stride

WALL MOUNTED

| Product | Size (Height) | | Mounting | LED | | Colour temp | Optic | Control | Body colour |
|-------------|---------------|---|--------------------|-------------|--|-------------------|----------------------------|-------------------|---------------|
| Axyl Stride | Square | M | Single Emission SE | 28 LEDs 28L | | CRI 90 2700 K 927 | Asymmetrical Wide Beam A/S | Non-Dim HF | White WH |
| | Rectangular | L | | | | CRI 90 3000 K 930 | | Remote DALI-2 RD* | Black BK |
| | | | | | | CRI 90 4000 K 940 | | | Light Grey GY |
| | | | | | | | | | Anth Grey ANT |

| EXAMPLE PRODUCT DESCRIPTION | | | | | | | |
|-----------------------------|---|----|-----|-----|-----|----|-----|
| Axyl Stride | M | SE | 28L | 927 | A/S | HF | ANT |

* Note: If the RD (Remote DALI-2) option is selected this will need ordering separately.
Visit the website for more information.



As a globally leading luminaire manufacturer, Thorn Lighting provides a five-year warranty for its complete product range within all European Countries.
thornlighting.com/guarantee

Thorn Lighting is constantly developing and improving its products. All descriptions, illustrations, drawings and specifications in this publication present only general particulars and shall not form part of any contract. The right is reserved to change specifications without prior notification or public announcement. All goods supplied by the company are supplied subject to the company's General Conditions of Sale, a copy of which is available on request. All measurements are in millimetres and weights in kilograms unless otherwise stated.
09/2024 (INT)

WE
MAKE
LIGHT
WORK