

THORN
LIGHTING

AXYL ETCH

SET THE SCENE

SET THE SCENE

For window frames or arches of any size, Axyl Etch let's you set the scene.

Axyl Etch features an optic specifically developed to provide optimum light distribution for accent lighting of window reveal applications.

Thanks to its small size mixed with high performance, Axyl Etch emits a narrow beam of light ($170^{\circ} \times 10^{\circ}$) allowing you to illuminate large apertures emphasising their features, angles and curves, creating visual depth of building surround facades.

Perfect for residential, public, historic to artistic façades, Axyl Etch offers creativity while using minimum energy consumption within a robust luminaire package.

This range is available with Non-Dim (On/Off) driver on-board, or a separate remote DALI-2 driver.



AXYL ETCH

FEATURES

SHAPE AND SIZES

Axyl Etch is available in one size (medium)
150 mm x 90 mm x 40 mm with square edges.

LIGHT QUALITY

CRI 80.

VISUAL COMFORT

Axyl Etch uses only one LED and thanks to its application specific linear optic, it provides a narrow 170° x 10° beam. This creates uniform light to accent window reveals or arches of any size.

CONTROLLABILITY

Available as Non-Dim (On/Off), or a remote DALI-2 driver can be ordered separately.

DURABILITY

Axyl Etch is rated IK10 and IP65.
Corrosion Class C3.

HOUSING COLOUR

Available in White (R9016), Black (R9005),
Light Grey (R9006) and Anthracite Grey (G9005).

WIRING

Luminaire supplied with 5 m neoprene H05RN-F cable for connection with remote (recessed) connection box.

TECHNICAL DESCRIPTION

Die-cast aluminium housing with high corrosion resistance.

Protective cover with clip locking system.

No visible screws.

Electrical Class I.

3 SDCM.

Risk Class RG2.

Clear polycarbonate diffuser.

Silicone gaskets.

Double Powder Paint process.

Operating Ambient Temperature -20 °C to +50 °C.

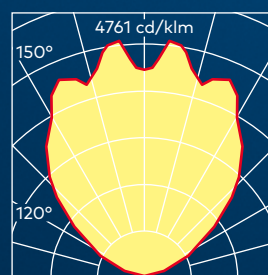
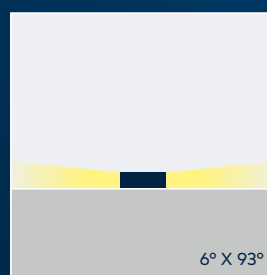
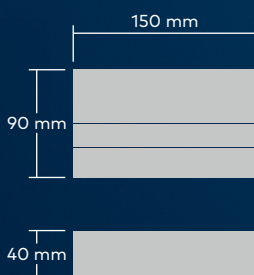
Lifetime: 70 000 Hrs L80 B10 Ta 25 °C / 50 000 Hrs

L80 B10 Ta 40 °C.

CERTIFICATION



MEDIUM (ONE SIZE)



PHOTOMETRIC SUMMARY

Size	Colour temp	Beam angle	Lumen output (lm)	Power (W)	Rated input Power (W)	Luminaire efficacy (lm/W)
Medium	827 (2700 K)	Elliptical beam 170° x 10°	171	3.3	4.7	36.38
	830 (3000 K)		181			38.51
	840 (4000 K)		208			44.26

ACCESSORIES

ORDERING CODE: 96700030

(GB IP67 35 W 230 V 700-1050 CL2 HFX)

POWER SUPPLY MULTI-POWER 230 V / 700 mA-

1050 mA DALI-2, PUSH DIM IN BOX.

IP67, 35 W, Class II.

Dimensions 175.5 mm x 86.5 mm x 43 mm.

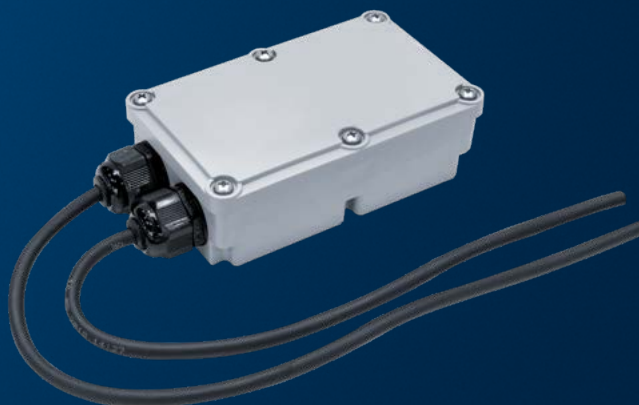
Will operate:

- Seven Axyl Etch luminaires

Maximum distance between luminaire
and power supply 10 m.

Operating Ambient Temperature -20 °C to +50 °C.

Built-in surge protection (kV) L/N-PE: 2 kV.





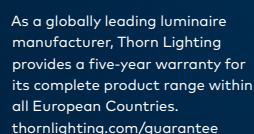


AXYL ETCH



Product	Size	Mounting	LED	Colour temp	Optic	Control	Body colour
Axyl Etch	Medium (150 mm x 90 mm x 40 mm)	Window Frame	LED Module made of a single LED	CRI 80 2700 K 827	Elliptical beam 170° x 10°	Non-Dim	White
				CRI 80 3000 K 830		Remote DALI-2	Black
				CRI 80 4000 K 840			Light Grey
							Anth Grey

EXAMPLE PRODUCT DESCRIPTION							
Axyl Etch	M	WF	1L	827	EB	RD	ANT



Thorn Lighting is constantly developing and improving its products. All descriptions, illustrations, drawings and specifications in this publication present only general particulars and shall not form part of any contract. The right is reserved to change specifications without prior notification or public announcement. All goods supplied by the company are supplied subject to the company's General Conditions of Sale, a copy of which is available on request. All measurements are in millimetres and weights in kilograms unless otherwise stated.

09/2024 (INT)

**WE
MAKE
LIGHT
WORK**