

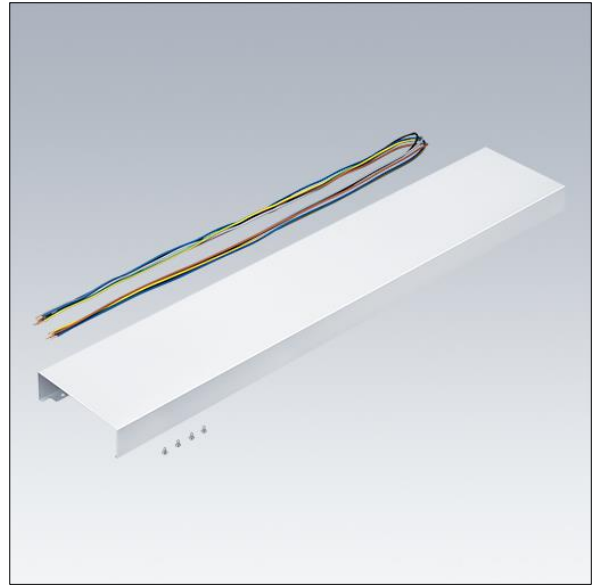
## Punch

96635745 <PUNCH 3 LV INFILL L15

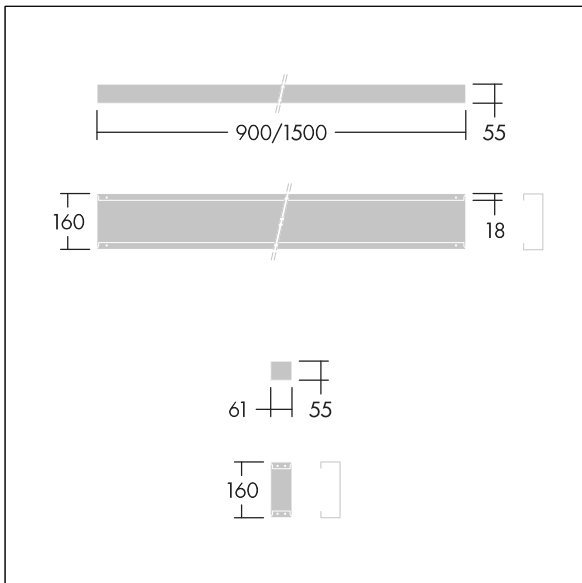
### Punch

Infill panel for Punch LV continuous run installations. Body: sheet steel powder coated white (close to RAL9016). For electrical through wiring, additional cable for luminaire needed.

Weight: 2.85 kg



TLG\_PNCH\_F\_Infill\_1700.jpg



TLG\_PNC3\_M\_LV\_RESD\_INFIL.wmf